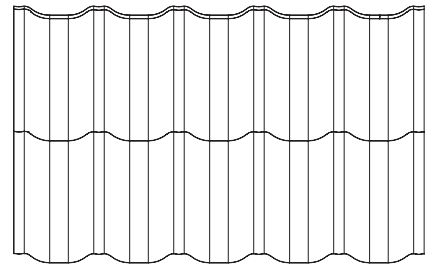
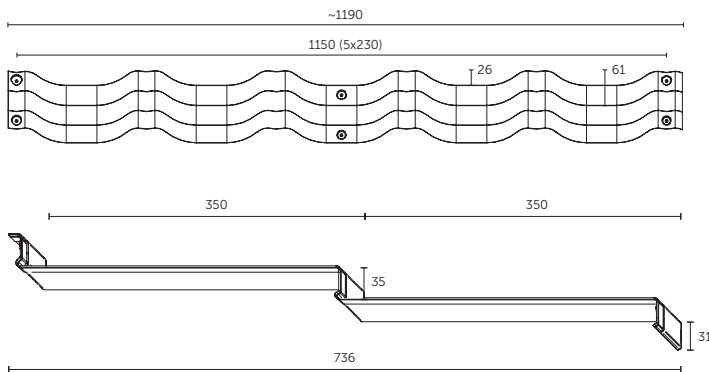




MODULAR ROOFS



INSPIRED BY ITALIAN STYLE.



Total sheet width:	1190 mm
Effective sheet width:	1150 mm
Distance between the wave peaks:	230 mm
Total sheet length:	736 mm
Effective sheet length:	700 mm
Module length:	350 mm
Total height:	61 mm
Step height:	35 mm
Wave height:	26 mm
Surface covered by the sheet:	0,805 m ²
Sheet thickness:	0,5 mm
Zinc coating:	min. 275 g/m ²
Sheet weight:	max 3,7 kg
Pallet dimensions:	1200 x 800 x 940 mm
Sheets per pallet:	350 pcs.
Layers/sheets per pallet:	10/35 pcs.
Effective m ² per pallet:	281,75 m ²
Pallet weight:	~1320 kg
Minimum roof pitch:	9° (15%)
Recommended roof pitch:	>25%



**STRENGTHENED
TRANSVERSE
FOLDS**



**TUCKED-DOWN
BOTTOM EDGE**



**PRE-DRILLED
MOUNTING
HOLES**



Product has received EUIPO registration certificate

Available coatings: X-Matt GreenCoat Crown BT, D-Matt, IDEAL-SATIN GreenCoat Pural BT, IDEAL-MATT GreenCoat Pural BT matt



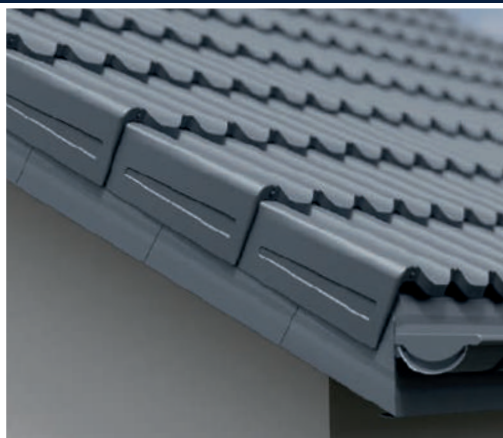
DEDICATED ACCESSORIES



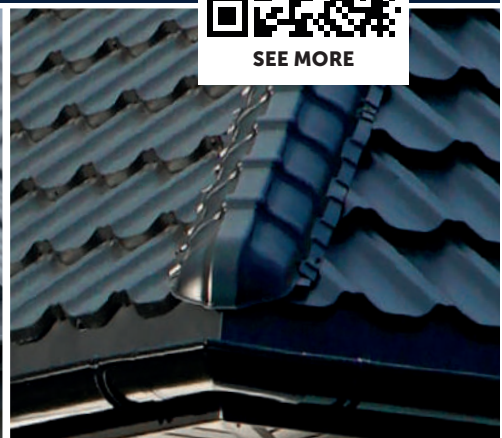
SEE MORE



Ridge cap GS-LUX
Stop end ZP-LUX



Dry verge Venecja
Drift - Universal bottom modular barge flashing



Stop end
ZS-LUX



DEDICATED ACCESSORIES



Dry verge
Venecja

Width:	372 mm
Height:	189 mm
Depth:	82 mm
Sheet thickness:	0,7 mm
Quantity per package:	12 pcs.
Colors:	10



Dry verge
Murano

Width:	364 mm
Height:	193,3 mm
Depth:	147,8 mm
Sheet thickness:	0,7 mm
Quantity per package:	6 pcs.
Colors:	10



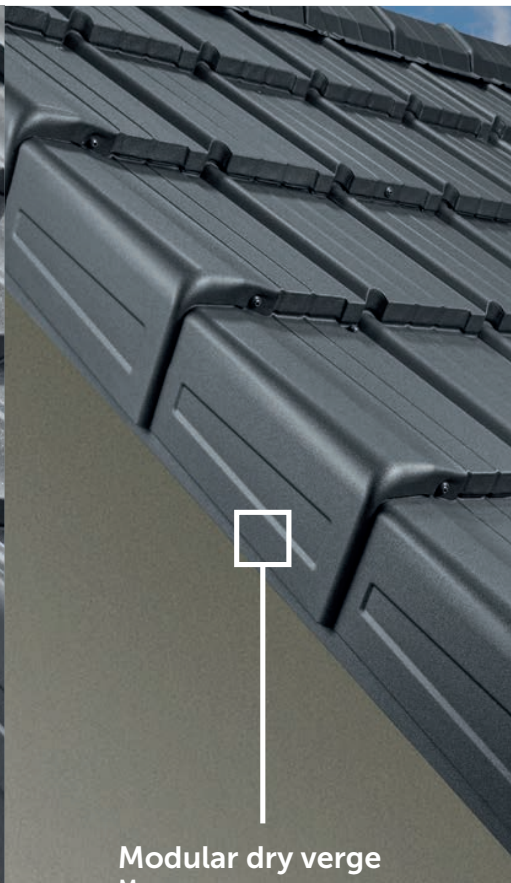
Dry verge
Bella Sara

Width:	360 mm
Height:	181 mm
Depth:	90 mm
Sheet thickness:	0,7 mm
Quantity per package:	8 pcs.
Colors:	10

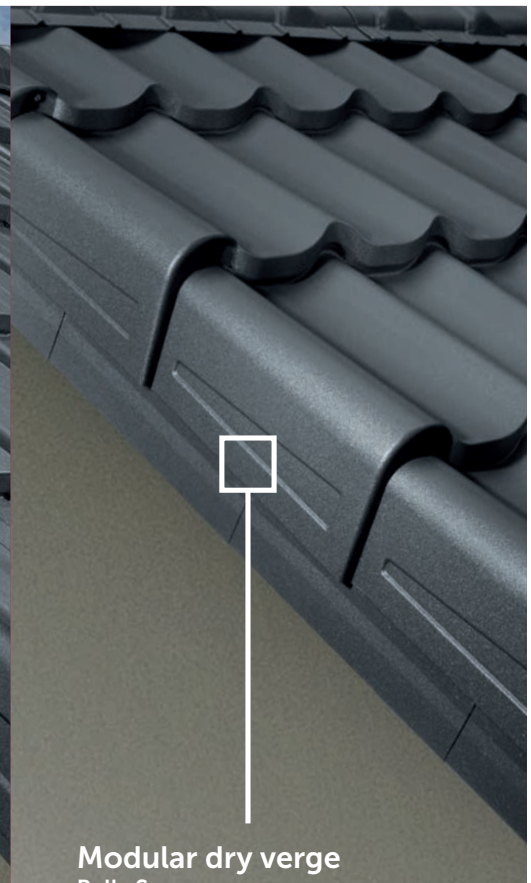
Material: Steel sheet S280 galvanized Z275 with organic coatings X-MATT SP30, D-MATT SP35



Modular dry verge
Venecja



Modular dry verge
Murano



Modular dry verge
Bella Sara



Drift 150
Universal bottom modular
barge flashing

Total width: **384 mm**
Effective width: **350 mm**
Height: **150 mm**
Depth: **40 mm**
Sheet thickness: **0,5 mm**
Quantity per package: **20 pcs.**
Colors: **8**
Left, Right



Drift 180
Universal bottom modular
barge flashing

Total width: **384 mm**
Effective width: **350 mm**
Height: **180 mm**
Depth: **40 mm**
Sheet thickness: **0,5 mm**
Quantity per package: **20 pcs.**
Colors: **8**
Left, Right



Drift 270
Universal bottom modular
barge flashing

Total width: **384 mm**
Effective width: **350 mm**
Height: **270 mm**
Depth: **40 mm**
Sheet thickness: **0,5 mm**
Quantity per package: **20 pcs.**
Colors: **8**
Left, Right



Drift 224
Universal outer modular
barge flashing

Total width: **381 mm**
Effective width: **350 mm**
Height: **224 mm**
Depth: **32 mm**
Sheet thickness: **0,5 mm**
Quantity per package: **20 pcs.**
Colors: **8**
Left, Right

Material: Steel sheet S280 galvanized Z275 with organic coatings X-MATT SP30, D-MATT SP35



Drift 224
Universal outer modular
barge flashing

New
in offer

Drift 150
Drift 180
Drift 270
Universal bottom modular
barge flashing



DEDICATED ACCESSORIES



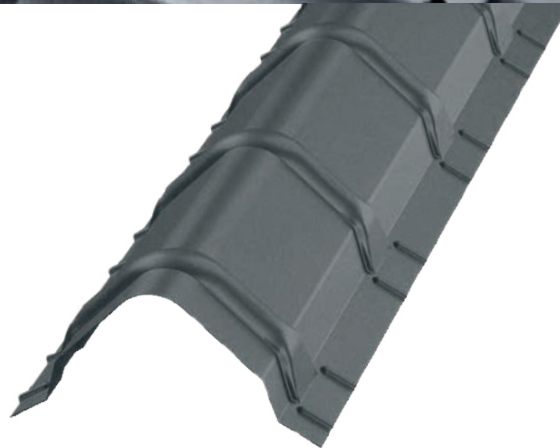
Product has received
WIPO registration
certificate



Ridge cap GS-LUX

Venecja, Bella Sara, Rialto, Ferrara

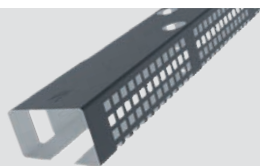
Total width: 1205 mm
Effective width: 1145 mm



Ridge cap GSC-TOP

Como

Total width: 1030 mm
Effective width: 940 mm



Eaves vent profile

Venecja, Murano, Bella Sara,
Rialto, Ferrara

Length: 1200 mm
Thickness: 0,5 mm
Height: 27/31 mm
Ventilation area: 132 cm²
Quantity per package: 42 pcs.



Eaves vent profile

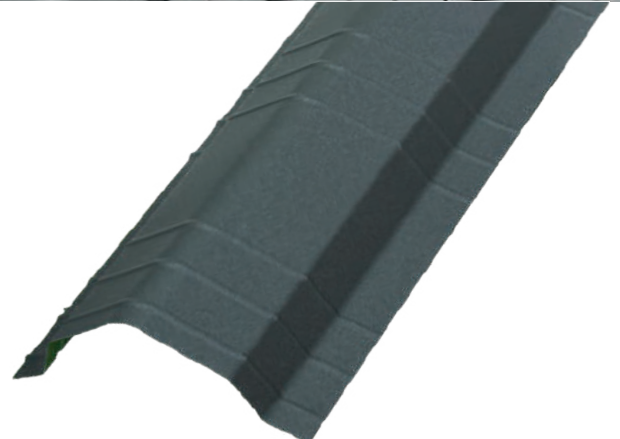
Como

Length: 1200 mm
Thickness: 0,5 mm
Height: 21/24 mm
Ventilation area: 132 cm²
Quantity per package: 60 pcs.



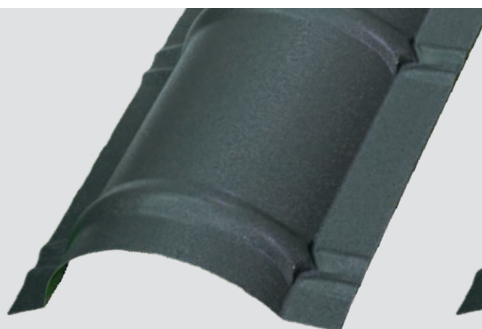
Ridge cap GSM-TOP
Murano

Total width:	1950 mm
Effective width:	1820 mm



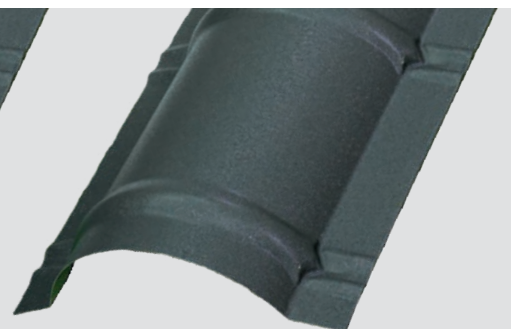
Ridge cap GSM-FLAT
Murano

Total width:	2000 mm
Effective width:	1950 mm



Ridge cap GSV-30
Venecja

Total width:	1950 mm
Effective width:	1840 mm



Ridge cap GSM-30
Murano

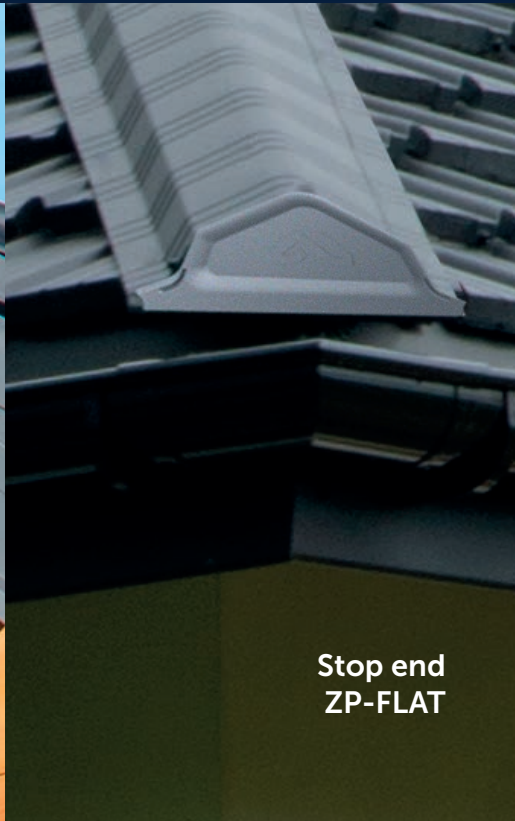
Total width:	1945 mm
Effective width:	1815 mm



DEDICATED ACCESSORIES



**Stop end
ZP-LUX**



**Stop end
ZP-FLAT**



**Stop end
ZP-TOP**



**Stop end
ZP-LUX**
for ridge cap GS-LUX

Width: 297 mm
 Height: 264 mm
 Depth: 65 mm
 Sheet thickness: 0,7 mm
 Quantity per package: 8 pcs.
 (vacuum sealed in a pack of 2pcs.)
 Colors: 10



**Stop end
ZP-FLAT**
for ridge cap GSM-FLAT

Width: 272 mm
 Height: 125 mm
 Depth: 35 mm
 Sheet thickness: 0,5 mm
 Quantity per package: 10 pcs.
 Colors: 16



**Stop end
ZP-TOP**
for ridge cap GSM-TOP and GSC-TOP

Width: 248 mm
 Height: 142 mm
 Depth: 35 mm
 Sheet thickness: 0,5 mm
 Quantity per package: 10 pcs.
 Colors: 16

Material: sheet steel S280 galvanized Z275, with organic coating SP35



Stop end
ZS-FLAT



Stop end
ZS-LUX



Stop end ZS-FLAT
for ridge cap GSM-FLAT

Width:	300 mm
Height:	102 mm
Depth:	232 mm
Sheet thickness:	0,7 mm
Quantity per package:	12 pcs.
Colors:	10



Stop end ZS-LUX
for ridge cap GS-LUX

Width:	308 mm
Height:	107 mm
Depth:	274 mm
Sheet thickness:	0,7 mm
Quantity per package:	12 pcs.
Colors:	10

Material: sheet steel S280 galvanized Z275, with organic coating SP35