



## ▲ ROOF PANELS

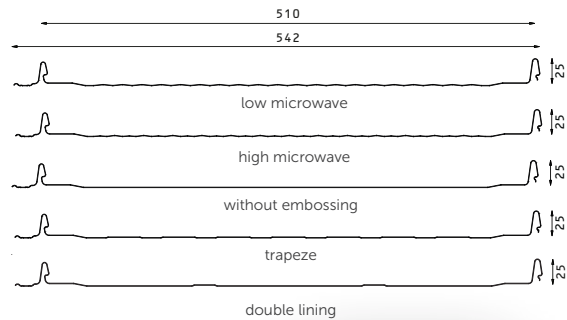
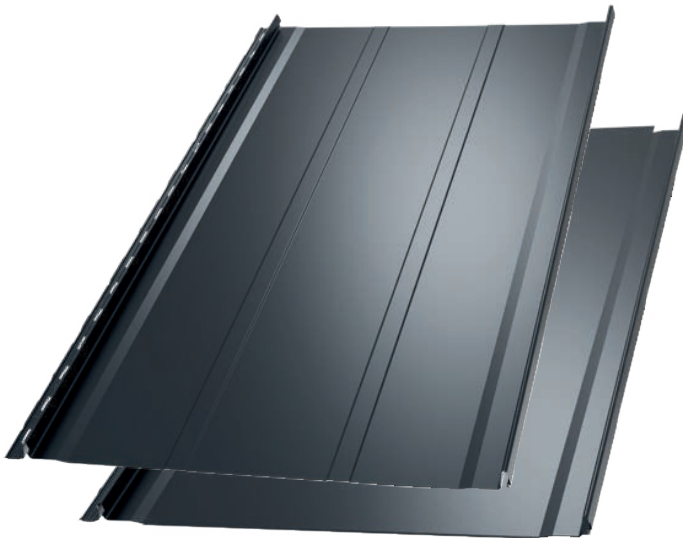
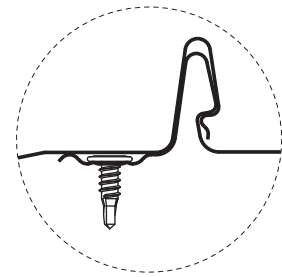
# TIMELESS ELEGANCE.

A distinguishable trait of roof panels is their classic and simple form. They suit both modern and historic roofs, are lightweight and require a lighter roof construction, which optimizes implementation costs. The roof panels, thanks to their characteristic edges and special embossing, also reinforce and stiffen the roof itself. This makes the roofing beautiful and exceptionally durable.



## IRON Click

## FREEDOM OF CHOICE.



Total width:	542 mm
Effective width:	510 mm
Sheet length:	1000-8000 mm
Total height:	25 mm
Sheet thickness:	0,5-0,7 mm
Zinc coating:	min. 275 g/m <sup>2</sup>
Minimum roof pitch:	8° (14%)

### Standard:

- 25 mm straight panel extension on the eaves side and 25 mm straight panel extension on the ridge side.

### Panel folding options (stiffens and forms a straight eave line):

- 25 mm panel extension fold-up from the eaves side and 25 mm straight panel extension on the ridge side.
- no panel extension on the eaves side and no panel extension on the ridge side

The standard and low microwave versions can be made of dimpled metal sheets\*. The dispersion of light reflections on dimpled panels makes the roof look even more impressive.

You may choose the design, covering and colours as per your individual taste.

\*Available only for 0.5 mm metal sheets.

Available coatings - Polyester Gloss, Ultramat, X-Matt GreenCoat Crown BT and on individual order in the following coatings: IDEAL-SATIN GreenCoat Pural BT, IDEAL-MATT GreenCoat Pural BT matt

IRON Click

Dimpled panels available

IRON Click  
TRAPEZE

IRON Click  
LOW MICROWAVE

Dimpled panels available

IRON Click  
HIGH MICROWAVE

IRON Click  
DOUBLE LINING

New  
in offer

Dimpled panels available



## INNOVATIONS



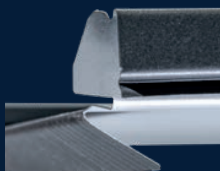
with fold-up



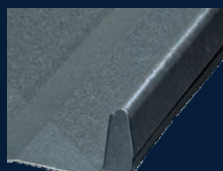
without extension



with extension (standard)



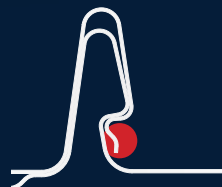
Lock cover (open)



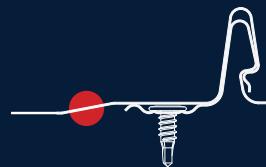
Lock cover (closed)



Mounting cups



Profiled lock covering edge

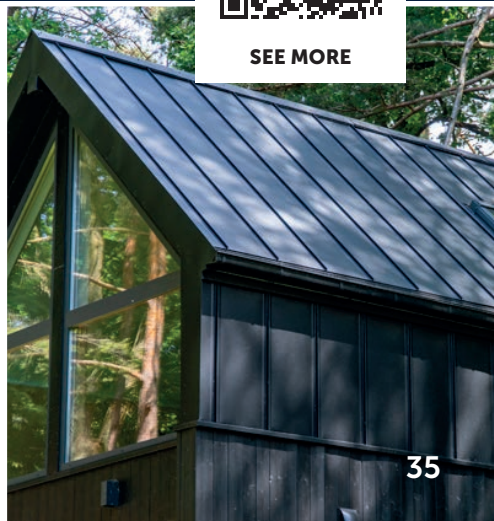


Raised panel surface

## REALIZATIONS



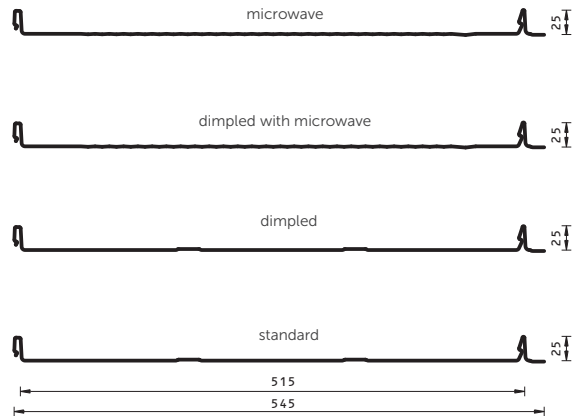
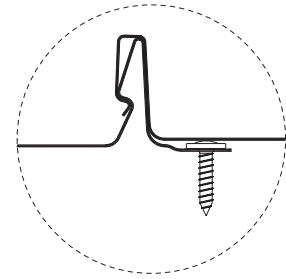
SEE MORE





## PRIME *ClickL*

## CLASSIC QUALITY.



Total width:	545 mm
Effective width:	515 mm
Sheet length:	800-8000 mm
Total height:	25 mm
Zinc coating:	min. 275 g/m <sup>2</sup>
Minimum roof pitch:	8° (14%)
Sheet thickness:	0,5-0,7* mm

\*0.7 mm metal sheets available only in the microwave version with the Polyester Gloss coating

### Type of reinforcement (longitudinal embossing of the panel):

- double-lining - defaultly
- no reinforcing embossings - upon Client's request

### Standard:

- type of reinforcement: double-lining embossing of the panel (does not apply to microwaved and dimpled panels)
- 25 mm straight panel extension on the eaves side and 25 mm straight panel extension on the ridge side

### Panel folding options (stiffens the panel and creates a straight eaves line):

- 25 mm panel extension fold-up from the eaves side and 25 mm straight panel extension on the ridge side.
- 50 mm panel extension fold-up from the eaves side and no panel extension on the ridge side (up to 2.5 mm)
- 50 mm straight panel extension on the eaves side and no panel extension on the ridge side (up to 2.5 mm)
- no panel extension on the eaves side (up to 2.5 mm) and 50 mm straight panel extension on the ridge side

Prime Click S and Prime Click L are available in coatings: Polyester Gloss, Ultramat, X-Matt GreenCoat Crown BT, IDEAL-SATIN GreenCoat Pural BT, IDEAL-MATT GreenCoat Pural BT matt

### PRIME *ClickL*



### PRIME *ClickL*

DIMPLED



### PRIME *ClickL*

MICROWAVE



### PRIME *ClickL*

DIMPLED WITH MICROWAVE



# ROOF PANELS



without fold-up  
standard



with fold-up

## REALIZATIONS

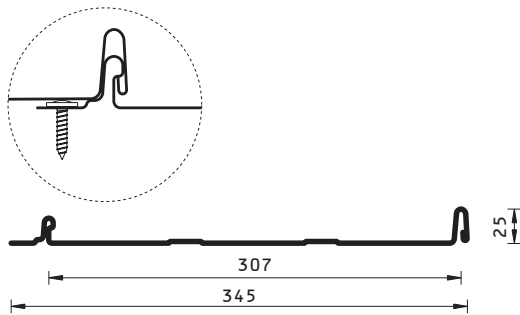


SEE MORE





## PRIME *ClickS*



Total width:	345 mm
Effective width:	307 mm
Sheet length:	800-8000 mm
Total height:	25 mm
Zinc coating:	min. 275 g/m <sup>2</sup>
Minimum roof pitch:	8° (14%)
Sheet thickness:	0,5-0,7 mm

### Type of reinforcement (longitudinal embossing of the panel):

- double-lining - defaultly
- no reinforcing extension - upon Client's request

### Standard:

- type of reinforcement: double-lining embossing of the panel
- 30 mm straight panel extension on the eaves side and no panel extension on the ridge side

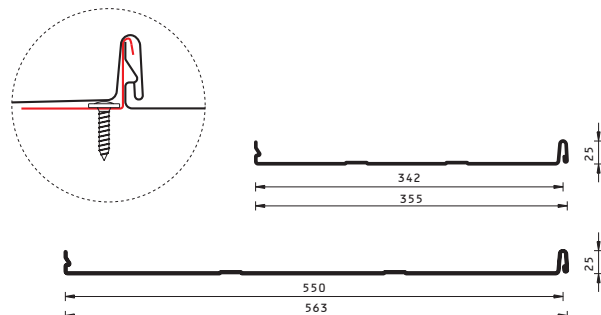
### Panel folding options

(stiffens the panel and creates a straight eaves line):

- 30 mm panel extension fold-up from the eaves side and no panel extension on the ridge side
- no panel extension on the eaves side and no panel extension on the ridge side

Prime Click S and Prime Click L are available in coatings: Polyester Gloss, Ultramat, X-Matt GreenCoat Crown BT, IDEAL-SATIN GreenCoat Pural BT, IDEAL-MATT GreenCoat Pural BT matt

## DUO *Snap*



Total width:	355/563 mm
Effective width:	342/550 mm
Sheet length:	800-8000 mm
Total height:	25 mm
Zinc coating:	min. 275 g/m <sup>2</sup>
Minimum roof pitch:	8° (14%)
Sheet thickness:	0,5-0,7 mm

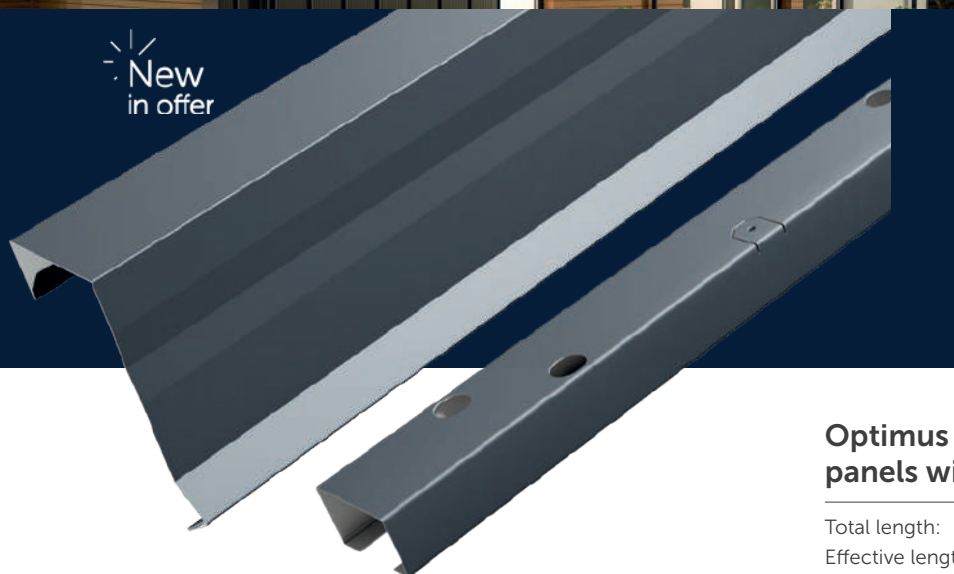
Traditional assembly using standing seam clips combined with the modern CLICK-Snap-In system.

Using the fixed and movable standing seam clips enables the movement of the material on the roof depending on weather conditions.

Available coatings: Polyester Gloss, Ultramat, X-Matt GreenCoat Crown BT, IDEAL-SATIN GreenCoat Pural BT, IDEAL-MATT GreenCoat Pural BT matt

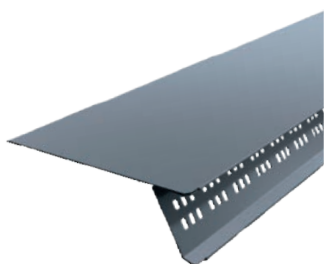


New  
in offer



## Optimus barge flashing for roof panels with an installation strip

Total length:	1200 mm
Effective length:	1170 mm
Flashing height:	132 mm
Width:	66 mm
Quantity per package:	6 sets
Colors:	32
Strip height:	30 mm
Strip width:	50mm
	Left, Right



### LS-14 starter strip

Length:	2000 mm
Width:	176 mm
Height:	70 mm
Ventilation area:	85,17 cm <sup>2</sup>



### GTR ridge cap

Total width:	2015 mm
Effective width:	1915 mm



### Ridge vent profile GTR LWG-29

Length:	990 mm
Quantity per package:	42 pcs.